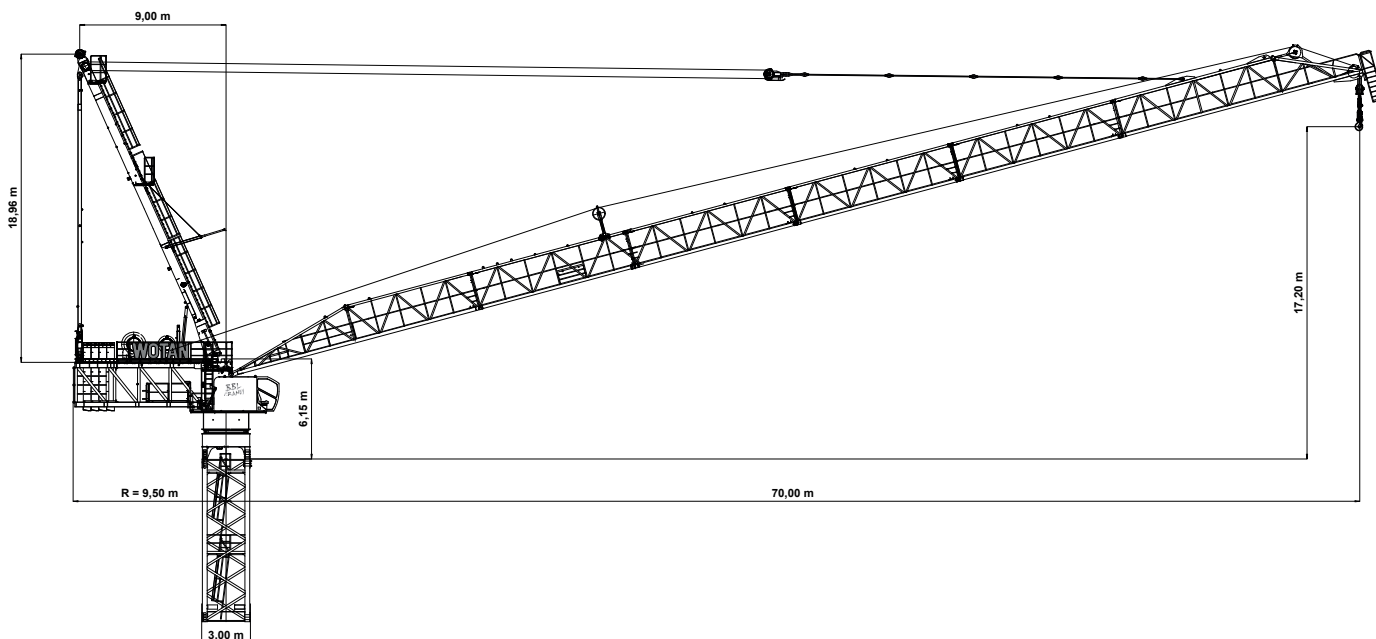


# DATENBLATT

## BBL 70124.32/2 WOTAN® BGL C.O.1.1250

BBL  
CRANES



Ausladung (m)	5,0	10,0	15,0	20,0	25,0	30,0	35,0	40,0	45,0	50,0	55,0	60,0	65,0	70,0
---------------	-----	------	------	------	------	------	------	------	------	------	------	------	------	------

Auslegerlänge (m)																Traglast (t)			
	70,0	bis 31,7	32,0	32,0	32,0	32,0	32,0	32,0	32,0	32,0	28,5	24,4	21,2	18,7	16,7		15,0	13,6	12,4
	65,0	bis 34,8	32,0	32,0	32,0	32,0	32,0	32,0	32,0	31,8	27,2	23,7	21,0	18,7	16,9	15,3			
	60,0	bis 31,4	32,0	32,0	32,0	32,0	32,0	32,0	32,0	30,2	26,3	23,3	20,8	18,8					
	55,0	bis 40,5	32,0	32,0	32,0	32,0	32,0	32,0	32,0	32,0	32,0	28,4	25,1	22,5					
	50,0	bis 42,1	32,0	32,0	32,0	32,0	32,0	32,0	32,0	32,0	32,0	29,7	26,3						
	45,0	bis 44,8	32,0	32,0	32,0	32,0	32,0	32,0	32,0	32,0	32,0	31,8							
	40,0	bis 40,0	32,0	32,0	32,0	32,0	32,0	32,0	32,0	32,0	32,0	32,0							
	35,0	bis 35,0	32,0	32,0	32,0	32,0	32,0	32,0	32,0	32,0	32,0								



### Technische Daten

max. Ausladung	70 m
Tragkraft	12.400 kg
max. Tragkraft	32.000 / 48.000 kg
Lastmoment	1250 mt
Fundamentkreuz Eckmaß	12 m
Fundamentanker	RT 30

### Antriebe

Motor	2 x 90 kW	2 x 90 kW
	0-90 m/min	0-70 m/min
Motor	2 x 90 kW	
	1,8 / 3,0 min	
Motor	4 x 7,5 kW	
	0,6 U/min	

### Elektrische Daten

Krankabel	2 Stk. 4x120 mm <sup>2</sup>
Anschlussleistung	300 kVA
Erforderliche Absicherung	630 A
Allstromsensitiver FI Typ B	0,5 A