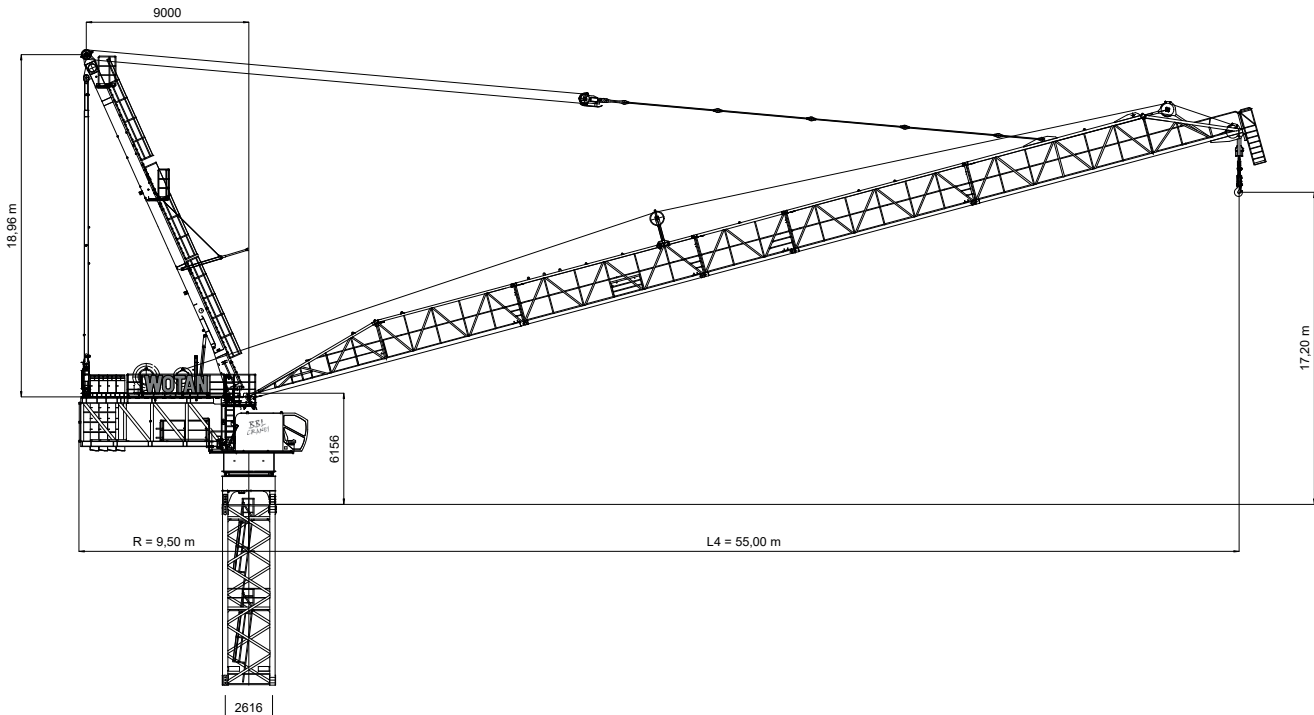



DATENBLATT

BBL 55180.32/2 WOTAN®

BBL
CRANES



Ausladung (m)	5,0	10,0	15,0	20,0	25,0	30,0	35,0	40,0	45,0	50,0	55,0	60,0	65,0	70,0	75,0
---------------	-----	------	------	------	------	------	------	------	------	------	------	------	------	------	------

Auslegerlänge (m)	 max. 32,0 t (48t möglich)	75,0	70,0	65,0	60,0	55,0	50,0	45,0	40,0	35,0	30,0	25,0	20,0	15,0	10,0	5,0	Traglast (t)		
		32,0	32,0	32,0	32,0	32,0	32,0	32,0	32,0	32,0	32,0	32,0	32,0	32,0	32,0	32,0		32,0	32,0
		32,0	32,0	32,0	32,0	32,0	32,0	32,0	32,0	32,0	32,0	32,0	32,0	32,0	32,0	32,0		32,0	32,0
		32,0	32,0	32,0	32,0	32,0	32,0	32,0	32,0	32,0	32,0	32,0	32,0	32,0	32,0	32,0		32,0	32,0
		32,0	32,0	32,0	32,0	32,0	32,0	32,0	32,0	32,0	32,0	32,0	32,0	32,0	32,0	32,0		32,0	32,0
		32,0	32,0	32,0	32,0	32,0	32,0	32,0	32,0	32,0	32,0	32,0	32,0	32,0	32,0	32,0		32,0	32,0
		32,0	32,0	32,0	32,0	32,0	32,0	32,0	32,0	32,0	32,0	32,0	32,0	32,0	32,0	32,0		32,0	32,0
		32,0	32,0	32,0	32,0	32,0	32,0	32,0	32,0	32,0	32,0	32,0	32,0	32,0	32,0	32,0		32,0	32,0
		32,0	32,0	32,0	32,0	32,0	32,0	32,0	32,0	32,0	32,0	32,0	32,0	32,0	32,0	32,0		32,0	32,0





Technische Daten

max. Ausladung	75 m
Tragkraft	8.000 kg
max. Tragkraft	32.000 / 48.000 kg
Lastmoment	1000 mt
Fundamentkreuz Eckmaß	8,0 / 10,0 m
Fundamentanker	RT 30

Elektrische Daten

Krankabel	2 Stk. 4x120 mm ²
Anschlussleistung	300 kVA
Erforderliche Absicherung	630 A
Allstromsensitiver FI Typ B	0,5 A

Antriebe

	Motor	 2 x 90 kW 0-90 m/min	 2 x 90 kW 0-70 m/min
	Motor	2 x 90 kW 1,8 - 3,0 min	
	Motor	4 x 7,5 kW 0,60 U/min	

*SONDERHUB

Jede Bewegung nur einzeln möglich, bei geringerer Geschwindigkeit. Durch Reduzierung der Geschwindigkeit werden die dynamischen Kräfte reduziert und durch eine höhere Nutzlast kompensiert. Das Drehwerk behält hierbei trotzdem sein volles Drehmoment.